

## USER MANUAL REFRIGERATED BIN CDR-1 / CDR-2



English – Original Language



Introduction	3
Scope of Delivery	3
Explanation of Symbols	3
Standards and Directives	3
Safety Information	3
Unpacking and installation	4
Technical Information	5
Electrical connecting	6
Operation	6
Thermostat	7
Defrost	7
Electrical Diagram	8
Cleaning	8
Service	8
Packaging Disposal	9
Device Disposal	9
Exploded View CDR-1	10
Spare parts list CDR-1	11
Exploded View CDR-2	12
Spare parts list CDR-2	13

## INTRODUCTION

- This manual is meant to provide customers with information on the waste cooler and its specifications and the necessary operating and maintenance instructions in order to guarantee the best possible use of the machine and preserve its efficiency in the long term.
- This manual is to be used by qualified and skilled people who will be informed about the use of the waste cooler and its periodical maintenance.

## Scope of Delivery

- 1 waste cooler
- 1 instruction manual

## Explanation of Symbols



**Warning!**

This symbol indicates dangers which can lead to injuries. It is imperative that you adhere strictly to the instructions on occupational safety and be particularly careful in such cases.



**WARNING: DANGER FROM ELECTRIC CURRENT!**

This symbol draws attention to dangerous situations caused by electric current. Failure to observe the safety instructions may result in injury or death!



**WARNING: HOT SURFACE - RISK OF BURNING!**

This symbol indicates the hot surface of the unit, during operation and thereafter. Risk of burns if ignored!

## Standards and Directives

The device complies with current EU standards and directives. If necessary, we will send you the corresponding declaration of conformity.

## Safety Instructions

1. To obtain full use of the cabinet, we recommend reading this instruction manual.
2. It is the user's responsibility to operate the appliance in accordance with the instructions given.
3. Contact your dealer immediately in case of any malfunctions.
4. Place the cabinet in a dry and ventilated place.
5. Keep the cabinet away from strongly heat-emitting sources and do not expose it to direct sunlight.
6. Always keep in mind that all electrical devices are sources of potential danger.
7. Do not store inflammable material such as thinner, gasoline etc. in the cabinet.
8. We declare that no asbestos nor any CFC are used in the construction.
9. The oil in the compressor does not contain PCB.

10. If the supply cord is damaged, it must be replaced by the manufacturer, its service agent or similarly qualified persons in order to avoid a hazard.
11. This appliance is not intended for use by persons (including children) with reduced physical, sensory or mental capabilities, or lack of experience and knowledge, unless they have been given supervision or instruction concerning use of the appliance by a person responsible for their safety. Cleaning and user maintenance shall not be made by children without supervision
12. Children should be supervised to ensure that they do not play with the appliance.
13. The appliances are not intended to be operated by means of an external timer or separate remote-control system
14. ⚠ WARNING: Keep ventilation openings, in the appliance enclosure or in the built-in structure, clear of obstruction.
15. ⚠ WARNING: Do not use mechanical devices or other means to accelerate the defrosting process, other than those recommended by the manufacturer.
16. ⚠ WARNING: Do not damage the refrigerant circuit.
17. ⚠ WARNING: Do not use electrical appliances inside the food storage compartments of the appliance, unless they are of the type recommended by the manufacturer.
18. Do not store explosive substances such as aerosol cans with a flammable propellant in this appliance.
19. The appliance is for climate class 4, please use in ambient temperature about 32 degree
20. The max. Loading of shelves is 20Kg.
21. The appliance use flammable insulation blowing gas C5H10, disposal of the appliance shall in accordance with the regulations of local authorities.
22. If the appliance use R290 refrigerant, when disposing of the appliance, please in accordance with the regulations of local authorities, and remove the door and lock assembly to avoid children accidentally becoming trapped inside the appliance.

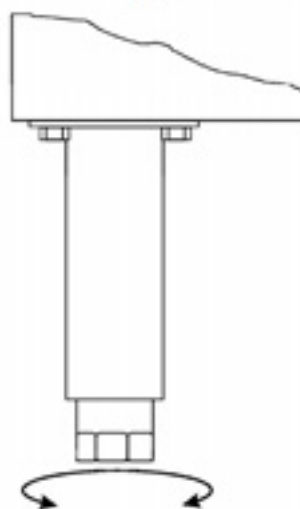
## Unpacking and Installation

Remove the wooden pallet and the packing. External surfaces are supplied with a protection foil, which must be removed before installation.

To ensure correct function it is important that the cabinet is level. The cabinet is supplied with legs, these can be adjusted.

See fig. 1.1

Fig. 1.1



## Technical Specifications

Model	CDR-1	CDR-2
Temperature Range (°C)	+4 +10	+4 +10
Insulation Thicknessmm	45	45
Capacity (L)	311	660
Type of Cooling	Ventilated	Ventilated
External Dimension	832×745×1092	1422×745×1092
W×D×H	832×745×1092	1422×745×1092
Internal Dimension	900×770×1220	1490×770×1220
W×D×H	520×630×950	1110×630×950
Package Dimension	85	114
W×D×H	900×770×1220	1490×770×1220
Gross Weight ( )	98	136
Net Weight ( )	85	114
Defrosting type	No defrost	No defrost
Evaporation of defrost water	Automatic	Automatic
Refrigerant	R134a	R134a
Compressor	FF8.5HBK	FF8.5HBK
Thermometat	Digital	Digital
Max circumstance temperature (°C)	30	30
Absorption (A)	3.5	3
Power Supply (V/Hz)	230/50	230/50

## Electrical connecting

**⚠** The cabinet operates on 230 V/50 Hz. The wall socket should be easily accessible.

All earthing requirements stipulated by the local electricity authorities must be observed. The cabinet plug and wall socket should then give correct earthing. If in doubt, contact your local supplier or authorized electrician.

The flexible cord fitted to this appliance has three cores for use with a 3-pin 13-Amp or 3-pin 15- Amp plug. If a B.S. 1363 (13-Amp) fused plug is used, it should be fitted with a 13-Amp fuse.

The wires in this mains lead are colored in accordance with the following code: Green/Yellow: Earth, Blue: Neutral, Brown: Live.

**⚠** The main electrical connections must be done by skilled electricians.

## Operation

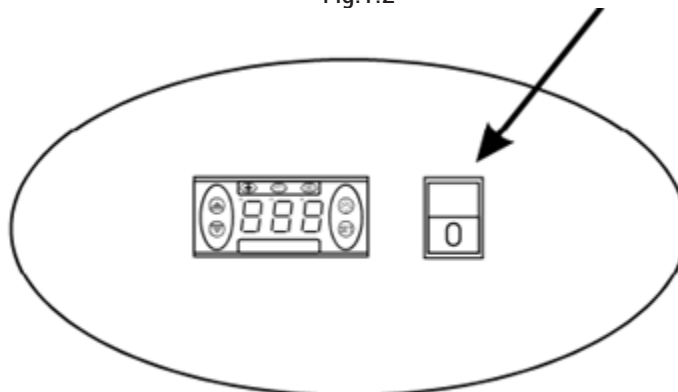
Before use, we recommend that the cabinet is cleaned, see the section on maintenance and cleaning.

### Important ! **⚠**

If the cabinet has been vertically placed during transport, please wait 2 hours before starting up the cabinet.

Connect the cabinet to a socket and turn on the switch on the control panel, see fig. 1.2.

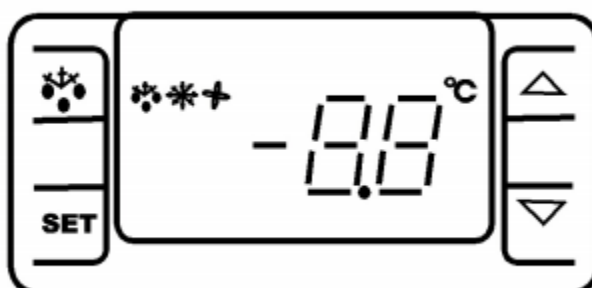
Fig.1.2



### Thermostat

The thermostat is placed in the control panel, see fig. 1.3

Fig 1. 3




The thermostat has been pre-set and in most cases it is not necessary to adjust the settings. When turning on the cabinet the display will show the current temperature in the cabinet.

#### Display set temperature :

 Press this key and the display will show the set temperature. Press the key again to return to normal reading.

#### Set new temperature:

 Press this key continuously for more than 3 seconds and the display shows the set temperature.

 Press this key to increase the set temperature.

 Press this key to lower the set temperature.

 Press this key to save the new settings. The display will flash with the new value and will then return to normal reading.

### Alarm codes :

"P1" Flashing in the display: indicates that the cabinet sensor is defective.

The cabinet will strive to keep the set temperature until it has been repaired.

"P2" Flashing in the display: indicates that the evaporator sensor is defective.

This does not influence the operation of the cabinet, but should be repaired as soon as possible.

### Defrosting

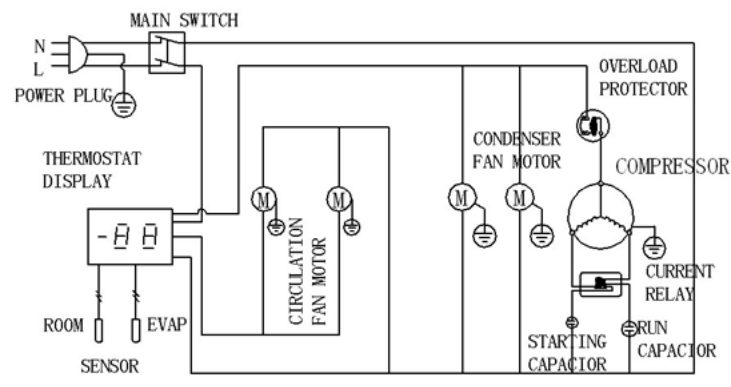
The cabinet defrosts automatically with pre-set intervals. If the door to the cabinet is opened or the contents of the cabinet is changed frequently it may become necessary to defrost the cabinet manually.



Pressing this key continuously for more than 3 seconds will start a manual defrosting and then return to normal operation.

Defrosted water runs to a container placed in the compressor compartment and evaporates.

### Electrical Diagram



### Maintenance and cleaning

**⚠** Switch the cooler off at the socket.

The cabinet must be periodically cleaned. Clean the external and internal surfaces of the cabinet with a light soap solution and subsequently wipe dry. External surfaces can be maintained using steel oil.

Do NOT use cleansers containing chlorine or other harsh cleansers, as these can damage the stainless steel surfaces and the internal cooling system.

Clean the condenser and the compressor compartment using a vacuum cleaner and a stiff brush.

**⚠** Do NOT hose the compressor compartment with water as this can cause short circuits and damage on the electrical parts.

### Service

The cooling system is a hermetically sealed system and does not require supervision, only cleaning.

If the cabinet fails to cool, check if the reason is a power cut.

If you cannot locate the reason to the failure of the cabinet, please contact your supplier. Please inform model and serial number of the cabinet. You can find this information on the rating label which is placed inside the cabinet in the top right hand side.

### PACKAGING DISPOSAL

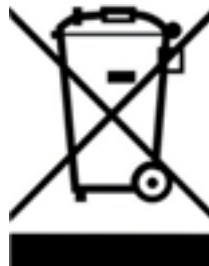
Please separate the packaging materials accordingly and return them to the responsible collection points for recycling and environmental housing.



### DEVICE DISPOSAL

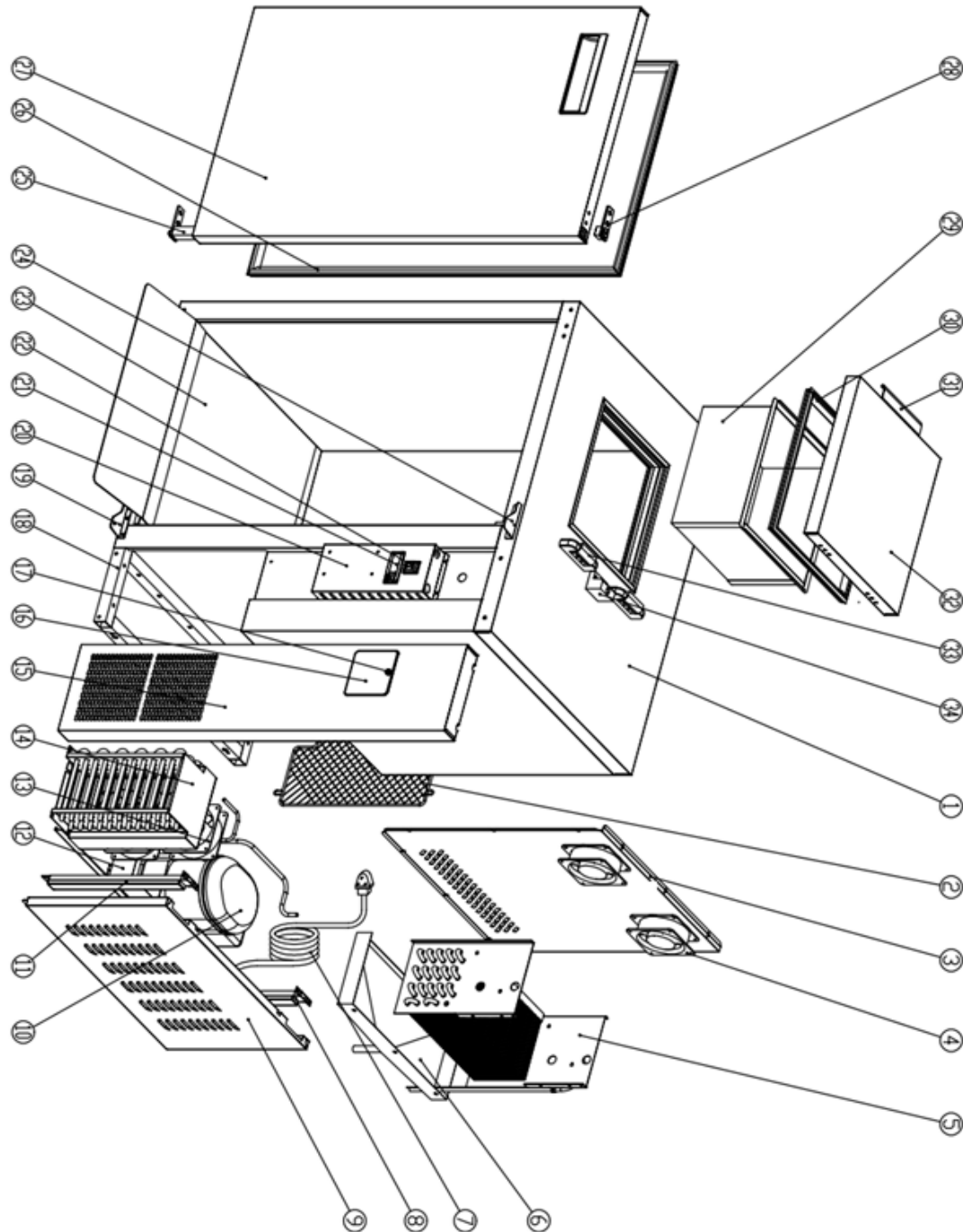
Once the appliance has been used up, dispose of it properly at a collection point for electrical appliances. Electrical appliances do not belong in household waste.

Your responsible administration will inform you about the addresses and opening hours of collection points. This is the only way to ensure that old appliances are properly disposed of and recycled. Thank you very much!





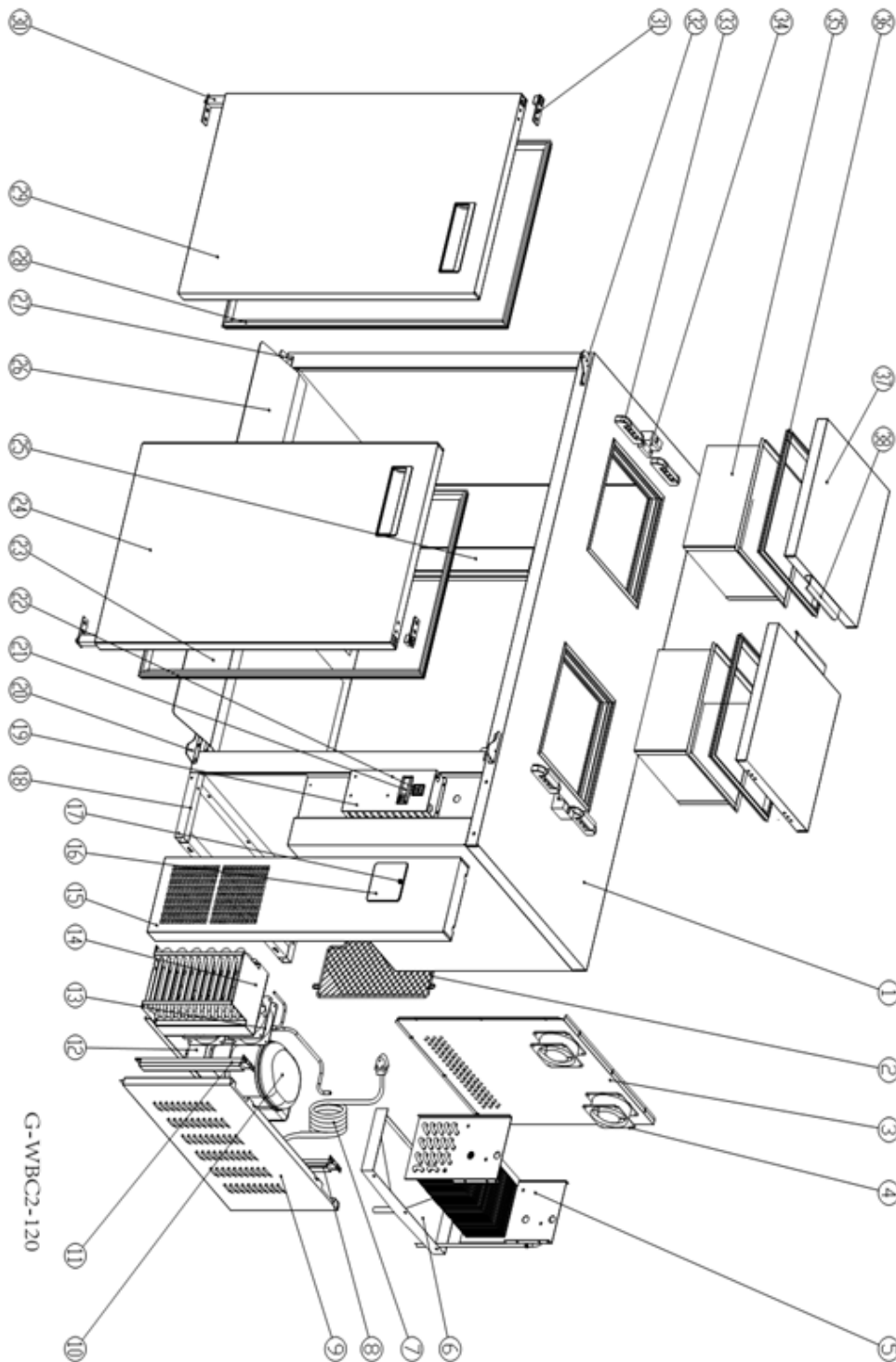
### Exploded View CDR-1



### Spare parts list CDR-1

N°	Code	Description	Qte
01	WBC1-120.01	BODY	1PC
02	WBC1-120.02	UNITE ROOM GRILLS	1PC
03	WBC1-120.03	EVAPORATOR COVER	1PC
04	S900.34	CONDENSER FAN	2PCS
05	WBC1-240.19	EVAPORATOR	1PC
06	WBC1-120.06	EVAPORATOR WATER PAN	1PC
07	S900.47	PLUG	1PC
08	WBC1-120.08	THE BACK CONNECT	1PC
09	WBC1-120.09	UNIT COVER	1PC
10	S903.05E	COMPRESSOR	1PC
11	WBC1-120.11	THE FRONT CONNECT	1PC
12	BC2-24.30	WATER BOX	1PC
13	S900.34	CONDENSER FAN	2PCS
14	WBC1-240.32	CONDENSER	1PC
15	WBC1-120.15	FRONT COVER	1PC
16	WBC1-120.04	THERMOSTAT COVER	1PC
17	SH3080.18	MANUALLY OPERATION BOLT	1PC
18	WBC1-120.18	UNIT SUPPORT	1PC
19	GN2100TN.12	DOOR DOWN HINGE RIGHT	1PC
20	WBC1-120.20	ELECTRICAL EQUIPMENT FIXER	1PC
21	WBC1-120.05	THERMOSTAT	1PC
22	S900.01	MAIN SWITCH	1PC
23	WBC1-120.23R	BOTTOM OF THE SHIELD	1PC
24	GN2100TN.65R	DOOR UP HINGE /RIGHT	1PC
25	GN650TN.14	DOOR SPRING HINGE	1PC
26	WBC1-120.26	GASKET	1PC
27	WBC1-120.27R	DOOR	1PC
28	GN650TN.10	DOWN HINGE AXIS JACKET	1PC
29	WBC1-120.29	GUIDE CYLINDER	1PC
30	WBC1-120.30	TOP GASKET	1PC
31	WBC1-240.07	HANDLE	1PC
32	WBC1-120.32	TOP COVER	1PC
33	WBC1-240.10	TOP COVER HINGE	2PCS
34	WBC1-240.11	TOP COVER SUPPORT	1PC

### Exploded View CDR-2



## Spare parts list CDR-2

N°	Code	Description	Qte
01	WBC2-120.01	BODY	1PC
02	WBC1-120.02	UNITE ROOM GRILLS	1PC
03	WBC1-120.03	EVAPORATOR COVER	1PC
04	S900.34	CONDENSER FAN	2PCS
05	WBC1-240.19	EVAPORATOR	1PC
06	WBC1-120.06	EVAPORATOR WATER PAN	1PC
07	S900.47	PLUG	1PC
08	WBC1-120.08	THE BACK CONNECT	1PC
09	WBC1-120.09	UNIT COVER	1PC
10	G-S903.01	COMPRESSOR	1PC
11	WBC1-120.11	THE FRONT CONNECT	1PC
12	BC2-24.30	WATER BOX	1PC
13	S900.34	CONDENSER FAN	2PCS
14	WBC1-240.32	CONDENSER	1PC
15	WBC1-120.15	FRONT COVER	1PC
16	WBC1-120.04	THERMOSTAT COVER	1PC
17	SH3080.18	MANUALLY OPERATION BOLT	1PC
18	WBC1-120.18	UNIT SUPPORT	1PC
19	WBC1-120.20	ELECTRICAL EQUIPMENT FIXER	1PC
20	GN2100TN.12	DOOR DOWN HINGE RIGHT	1PC
21	WBC1-120.05	THERMOSTAT	1PC
22	S900.01	MAIN SWITCH	1PC
23	WBC1-120.23R	BOTTOM OF THE SHIELD	1PC
24	WBC1-120.27R	DOOR	1PC
25	WBC2-120.25	MIDDLE BRIDGE	1PC
26	WBC1-120.23L	BOTTOM OF THE SHIELD	1PC
27	GN2100TN.65L	DOOR DOWN HINGE/ LEFT	1PC
28	WBC1-120.26	GASKET	1PC
29	WBC1-120.27L	DOOR	1PC
30	GN650TN.14	DOOR SPRING HINGE	1PC
31	GN650TN.10	DOWN HINGE AXIS JACKET	2PCS
32	GN2100TN.65L	DOOR UP HINGE /LEFT	1PC
33	WBC1-240.10	TOP COVER HINGE	4PCS
34	WBC1-240.11	TOP COVER SUPPORT	2PCS
35	WBC1-120.29	GUIDE CYLINDER	2PCS
36	WBC1-120.30	TOP GASKET	2PCS
37	WBC1-120.32	TOP COVER	2PCS
38	WBC1-240.07	HANDLE	2PCS



CE